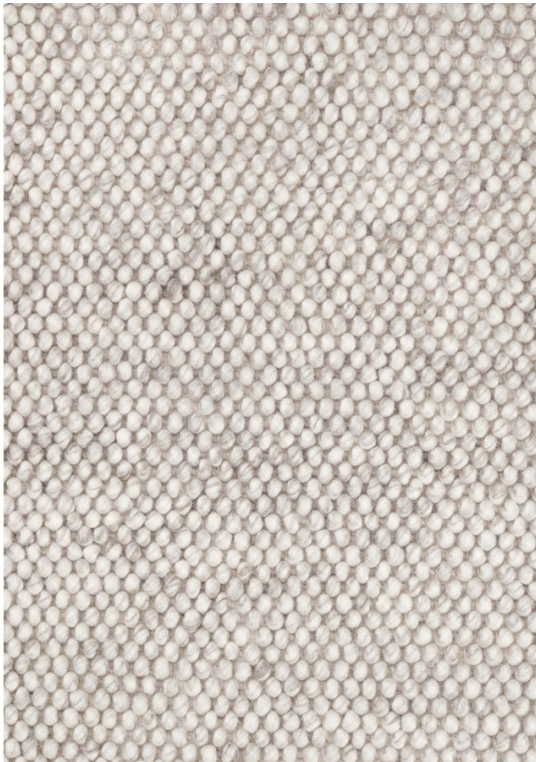


CLOAK

Swell light-grey



Technical Specifications

| | |
|-----------------------|---|
| Product Name + Color: | Swell light-grey |
| Product ID: | 32331 |
| Material: | 100% New Zealand Wool |
| Construction: | Hand woven |
| Surface: | Loop pile |
| Height: | 3 |
| Max Width: | 500 cm |
| Max Length: | 1200 cm |
| Max Diameter: | 450 cm |
| Edge Finish: | None |
| Backing: | Cotton backing |
| Size Variation: | +/- 5% |
| Color Accuracy: | This product is hand dyed. Color deviations can occur |
| Application: | area rug, wall covering |
| Country of Origin: | India |

Performance

Traffic: Suitable for most applications with the exception of high traffic zones, stairs, corridors or for use with caster chairs.

Flammability: This textile meets all appropriate flammability requirements for floors.

Environmental Compliance

LEED contribution: LEED V4 ID+C MR Credit: Building Product Disclosure and Optimization - Bio-Based Materials. Wool is a rapidly renewable content, [REACH](#) Compliant, Azo-free dyes

Social Compliance

Certified by [Goodweave](#), ISO 9001:2015 certified, RUGMARK certified

Maintenance

- Vacuum or brush lightly to remove surface dust
- Wet spills should be removed gently with a dry cloth
- Avoid aggressive rubbing
- Do not use a vacuum cleaner with a brush roll or beater bar
- Professional cleaning is recommended.

Warranty

2 years. [See Terms and Conditions](#) for more information.