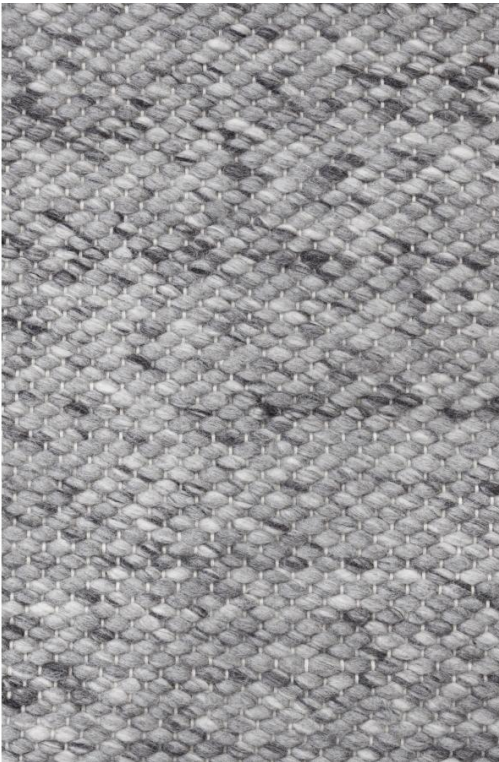


CLOAK

Net stone



Technical Specifications

Product Name + Color:	Net stone
Product ID:	34938
Material:	100% New Zealand Wool
Construction:	Hand woven
Surface:	Loop pile
Height:	1.3
Weight:	3500
Max Width:	460 cm
Max Length:	1200 cm
Max Diameter:	460 cm
Edge Finish:	None
Backing:	Cotton backing
Size Variation:	+/- 5%
Color Accuracy:	This product is hand dyed. Color deviations can occur
Application:	area rug, wall covering
Country of Origin:	India

Performance

Traffic: Suitable for most applications with the exception of high traffic zones, stairs, corridors or for use with caster chairs.

Flammability: This textile meets all appropriate flammability requirements for floors.

Environmental Compliance

LEED contribution: LEED V4 ID+C MR Credit: Building Product Disclosure and Optimization - Bio-Based Materials. Wool is a rapidly renewable content, [REACH](#) Compliant, Azo-free dyes

Social Compliance

Certified by [Goodweave](#), ISO 9001:2015 certified, RUGMARK certified

Maintenance

- Vacuum regularly to remove surface dust
- Wet spills should be removed gently with a dry cloth
- Avoid aggressive rubbing
- Professional cleaning is recommended
- Do not use a vacuum cleaner with a brush roll or beater bar
- Excess yarns can be trimmed off with scissors.

Warranty

2 years. [See Terms and Conditions](#) for more information.