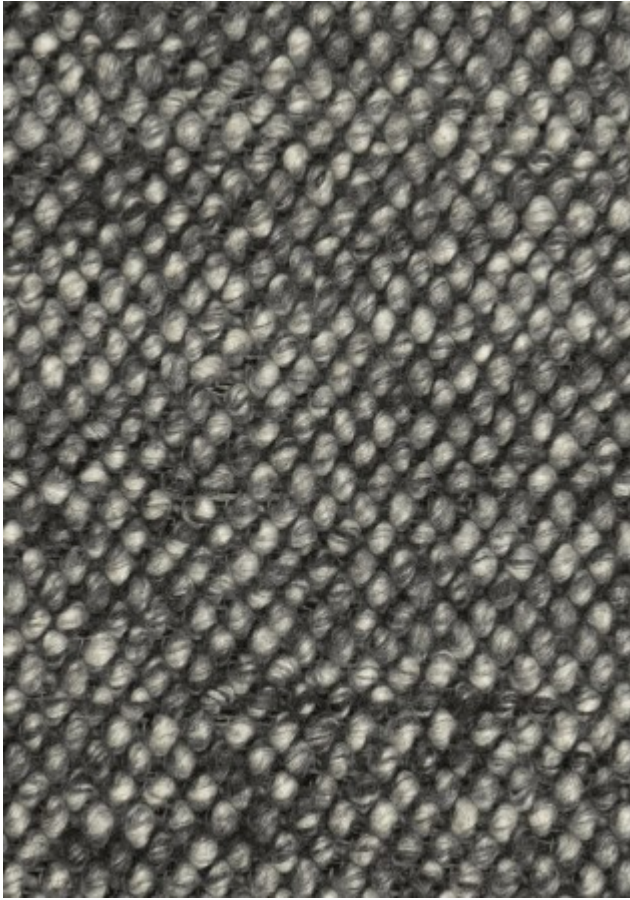


CLOAK



Swell grey

Performance

Traffic: Suitable for most applications with the exception of high traffic zones, stairs, corridors or for use with caster chairs.

Flammability: This textile meets all appropriate flammability requirements for floors.

Environmental Compliance

LEED contribution: LEED V4 ID+C MR Credit: Building Product Disclosure and Optimization - Bio-Based Materials. Wool is a rapidly renewable content., Certified by [REACH](#)

Social Compliance

Certified by [Cair & Fair](#)

Maintenance

Vacuum or brush lightly to remove surface dust. Wet spills should be removed gently with a dry cloth. Avoid aggressive rubbing. Do not use a vacuum cleaner with a brush roll or beater bar. Professional cleaning is recommended.

Technical Specifications

Product ID: 32621

Material: 100% New Zealand Wool

Construction: Hand woven

Surface: Loop pile

Height: 3 cm

Max Width: 500 cm

Max Length: 1200 cm

Max Diameter: 450 cm

Edge Finish: None

Backing: Cotton backing

Size Variation: +/- 5%

Application: area rug, wall covering

Country of Origin: India

Warranty

2 years. [See Terms and Conditions](#) for more information.